

# *Swenoda Township, Swift County Mn* **LAND AUCTION**

**80 +/-  
ACRES**

**93  
CPI**

**AUCTION OPENS December 13<sup>th</sup> @ 10AM | AUCTION CLOSES December 23<sup>rd</sup> @ 11AM**

**80 +/- ACRES SOLD AS 1 PARCEL**

**Located in Section 8, Swenoda Township, Swift County, Minnesota**

**LEGAL DESCRIPTION: SECT-08-TWP-120 RANG-40 N 1/2 OF NE 1/4**

Auction  
Conducted By

**Fragodt Auction Co.**

**Family Owned Full Service  
Auction Company Specializing in  
Land and Farm Equipment Sales**

• & REAL ESTATE •

License:  
MN-76-12



**[www.FragodtAuctions.com](http://www.FragodtAuctions.com)**

Office 320-734-4408 Randy 320-808-8731 Jacob 320-760-3652 Nathan 320-297-0578



# AUCTION TERMS & CONDITIONS

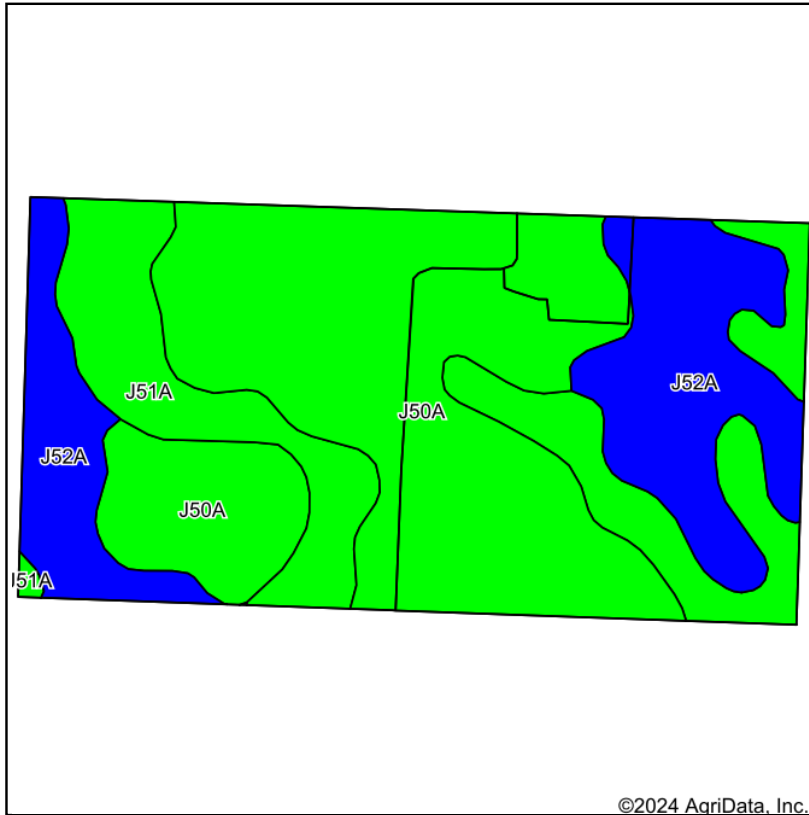
- There is a 4% Buyer's Premium.
- The 4% fee outlined previously shall be in addition to the final bid price to equal the full purchase price.
- Property to be sold BY DEEDED ACRE.
- Auctioneer is representing the seller.
- Real Estate is being sold "As Is, Where Is" with no Contingency Seller and Auctioneer give no warranties or guarantees; expressed or implied.
- Financing is not a contingency for this Auction.
- Real Estate Taxes Due in 2024 will be Paid by the Seller.
- Buyer should rely on their own information and judgement.
- Property will be sold subject to owner confirmation.
- Successful bidder will be required to pay 10% down (non-refundable) and sign a purchase agreement immediately following the auction. The Balance will be due at closing, approx 30 days after auction or when paperwork is prepared.
- A Real Estate Attorney will be handling all earnest money.
- Closing will take place at: Swenson, Nelson & Stulz PLLC, Madison, MN.
- Buyer and seller are responsible for their own closing costs.
- All announcements made on auction day take precedence over any advertised material.
- A clean and marketable title will be available day of closing
- All information provided in all forms about the subject property were obtained from sources deemed reliable. While we do not doubt the accuracy, we have not verified it and make no guarantee, warranty, or representation about it. Any projections, opinions, assumptions, or estimates used are for example only and do not present the current or future performance of the property. It is your responsibility to independently verify the accuracy and completeness of all information

**Fragodt Auction Co.**

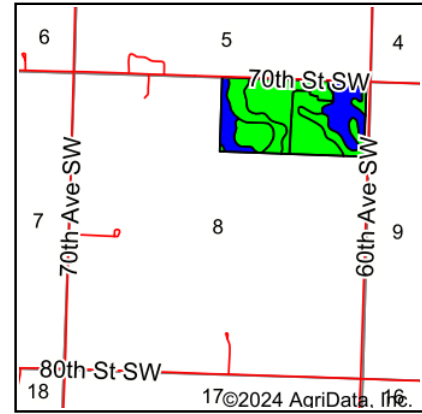
• & REAL ESTATE •



# SOILS MAP



Soils data provided by USDA and NRCS.



State: **Minnesota**  
 County: **Swift**  
 Location: **8-120N-40W**  
 Township: **Swenoda**  
 Acres: **78.36**  
 Date: **10/29/2024**

**Fragodt Auction Co.**  
 & REAL ESTATE

Maps Provided By:  
  
 CUSTOMIZED ONLINE MAPPING  
 © AgriData, Inc. 2023 www.AgriDataInc.com



Area Symbol: MN151, Soil Area Version: 22

Code	Soil Description	Acres	Percent of field	PI Legend	Non-Irr Class *c	Productivity Index	*n NCCPI Overall	*n NCCPI Corn	*n NCCPI Small Grains	*n NCCPI Soybeans
J50A	Balaton-Tara complex, 1 to 3 percent slopes	40.35	51.5%		IIs	96	74	60	62	74
J52A	Rondell silty clay loam, 1 to 3 percent slopes	19.36	24.7%		IIs	89	69	56	52	69
J51A	Bearden-Quam, depressional, complex, 0 to 2 percent slopes	18.65	23.8%		IIs	91	74	61	61	74
Weighted Average					2.00	93.1	*n 72.8	*n 59.2	*n 59.3	*n 72.8

\*n: The aggregation method is "Weighted Average using all components"

\*c: Using Capabilities Class Dominant Condition Aggregation Method

Soils data provided by USDA and NRCS.



United States  
Department of  
Agriculture

## Swift County, Minnesota

# Farm 8045 Tract 2051

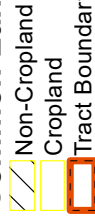
2024 Program Year

Map Created April 11, 2024

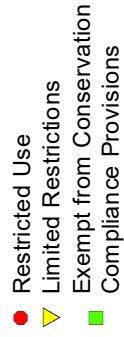


Unless otherwise noted:  
Shares are 100% operator  
Crops are non-irrigated  
Corn = yellow for grain  
Soybeans = common soybeans for grain  
Wheat = HRS, HRW = Grain  
Sunflower = Oil, Non-Oil = Grain  
Oats and Barley = Spring for grain  
Rye = for grain  
Peas = process  
Alfalfa, Mixed Forage AGM, GMA, IGS = for forage  
Beans = Dry Edible  
NAG = for GZ  
Canola = Spring for seed

## Common Land Unit



## Wetland Determination Identifiers



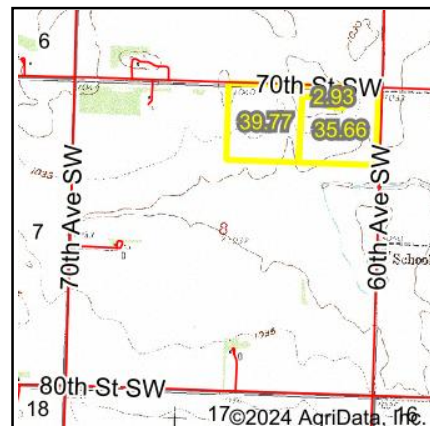
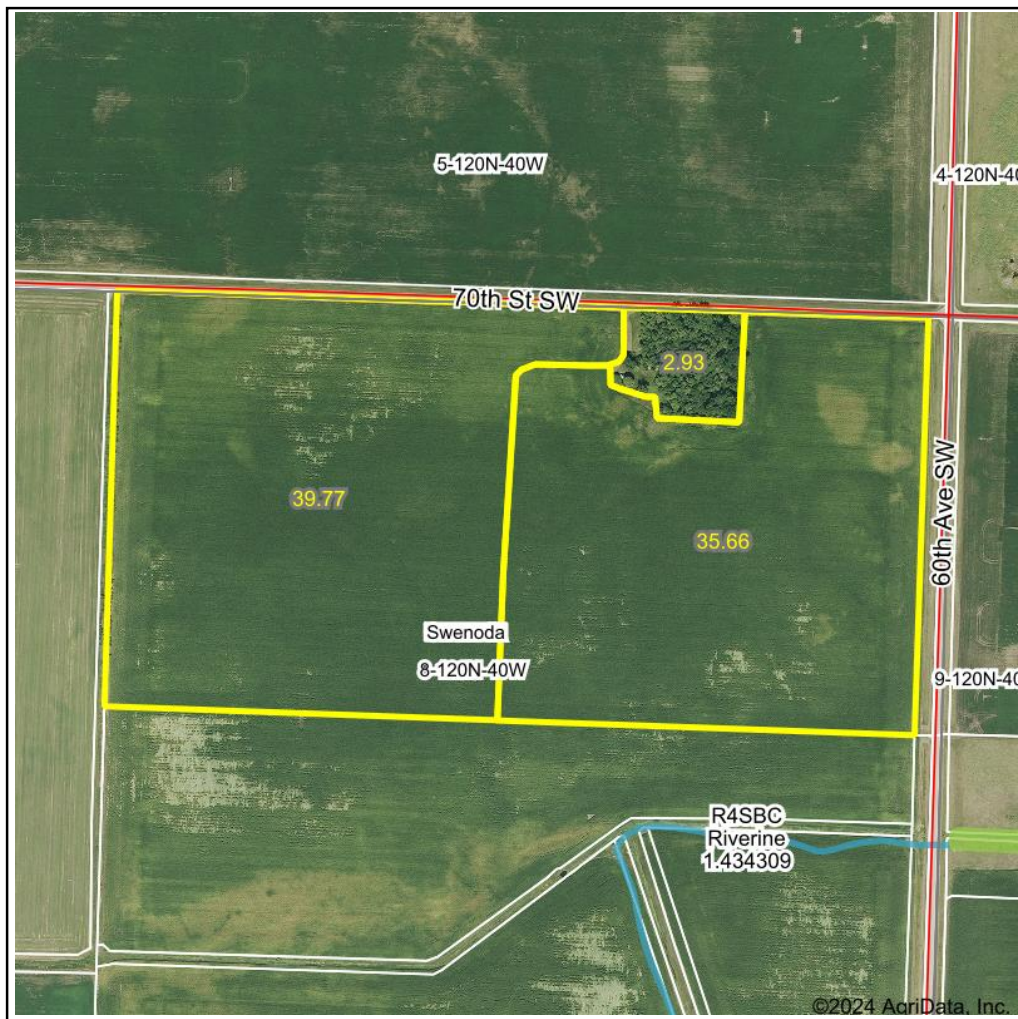
Tract Cropland Total: 75.55 acres



United States Department of Agriculture (USDA) Farm Service Agency (FSA) maps are for FSA Program administration only. This map does not represent a legal survey or reflect actual ownership; rather it depicts the information provided directly from the producer and/or National Agricultural Imagery Program (NAIP) imagery. The producer accepts the data 'as is' and assumes all risks associated with its use. USDA-FSA assumes no responsibility for actual or consequential damage incurred as a result of any user's reliance on this data outside FSA Programs. Wetland identifiers do not represent the size, shape, or specific determination of the area. Refer to your original determination (CPA-026 and attached maps) for exact boundaries and determinations or contact USDA Natural Resources Conservation Service (NRCS). This map displays the 2021 NAIP imagery.



# WETLANDS MAP



State: **Minnesota**  
 Location: **8-120N-40W**  
 County: **Swift**  
 Township: **Swenoda**  
 Date: **10/29/2024**

**Fragodt Auction Co.**  
 • & REAL ESTATE •

Maps Provided By:



0ft 663ft 1326ft

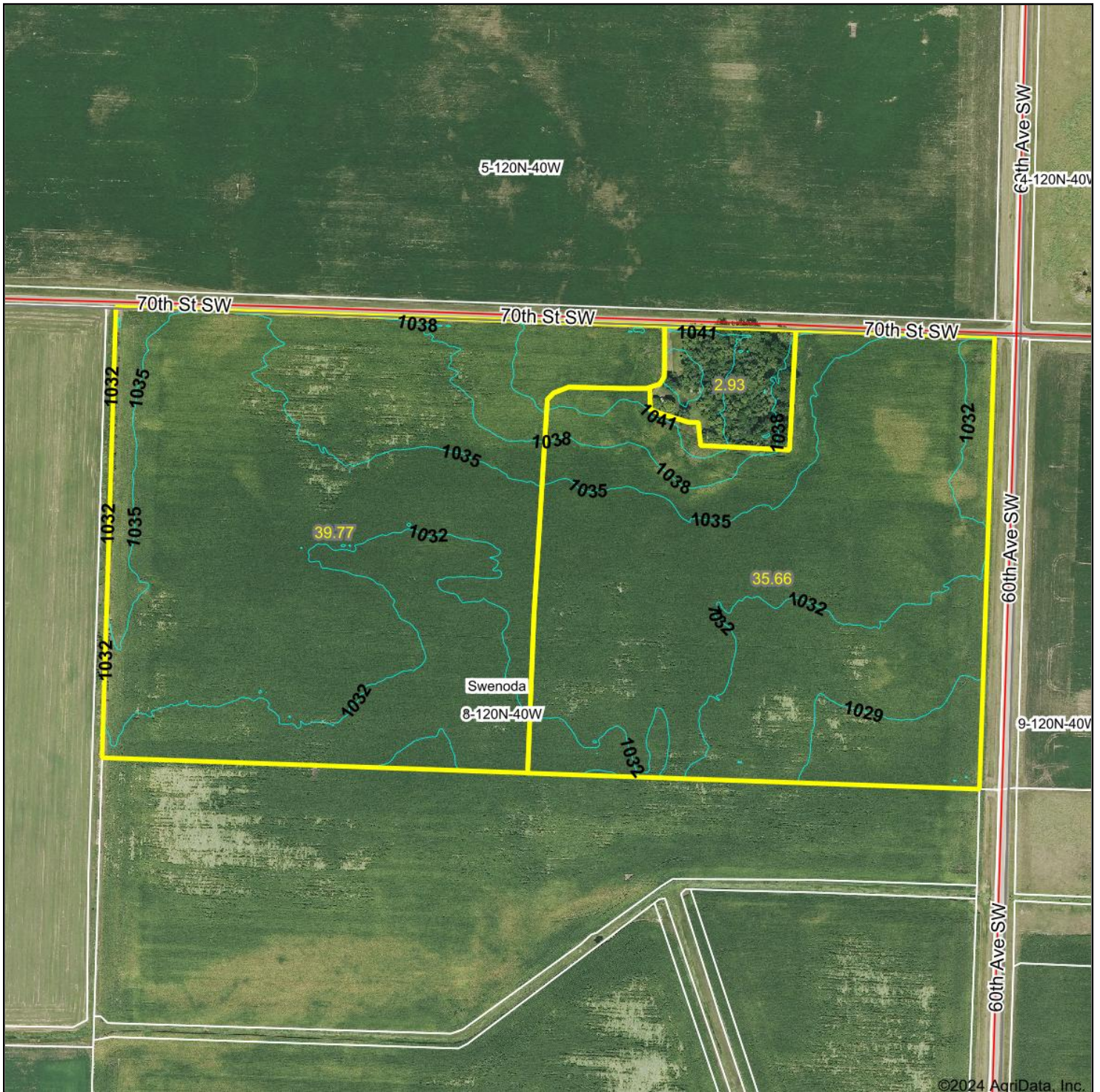
Classification Code	Type	Acres
	Total Acres	0.00

Data Source: National Wetlands Inventory website. U.S. DoI, Fish and Wildlife Service, Washington, D.C. <http://www.fws.gov/wetlands/>

Field borders provided by Farm Service Agency as of 5/21/2008.



# TOPOGRAPHY MAP



**Fragodt Auction Co.**

• & REAL ESTATE •

Maps Provided By:



© AgriData, Inc. 2023 www.AgriDataInc.com

Field borders provided by Farm Service Agency as of 5/21/2008.

Source: USGS 3 meter dem

Interval(ft): 3.0

Min: 1,025.9

Max: 1,046.3

Range: 20.4

Average: 1,033.9

Standard Deviation: 3.15 ft

0ft 456ft 912ft



10/29/2024

**8-120N-40W**  
**Swift County**  
**Minnesota**

Boundary Center: 45° 13' 20.28, -95° 42' 2.52





**HIGHLY ERODIBLE LAND AND WETLAND CONSERVATION DETERMINATION**

Name \_\_\_\_\_ Request 6/30/2016 County: \_\_\_\_\_ Swift  
Address \_\_\_\_\_ Date: \_\_\_\_\_  
\_\_\_\_\_ MN 56231  
Agency or \_\_\_\_\_ Operator Tract 2051 FSA Farm 3873  
Requesting No: \_\_\_\_\_ No: \_\_\_\_\_

**Section I - Highly Erodible Land**

Is a soil survey now available for making a highly erodible land determination? ☐  
Are there highly erodible soil map units on this farm? ☐

Fields in this section have undergone a determination of whether they are highly erodible land (HEL) or not; fields for which an HEL Determination has not been completed are not listed. In order to be eligible for USDA benefits, a person must be using an approved conservation system on all HEL.

<u>Field(s)</u>	<u>HEL(Y/N)</u>	<u>Sodbust (Y/N)</u>	<u>Acres</u>	<u>Determination Date</u>
<b>Refer to the Previous HEL determination available on file from your FSA office</b>				

The Highly Erodible Land determination was completed in the \_\_\_\_\_

**Section II - Wetlands**

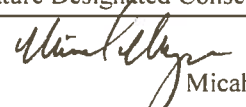
Fields in this section have had wetland determinations completed. See the Definition of Wetland Label Codes for additional information regarding allowable activities under the wetland conservation provisions of the Food Security Act and/or when wetland determinations are necessary to determine USDA program eligibility.

<u>Field(s)</u>	<u>Wetland Label</u>	<u>Occurrence Year</u>	<u>Acres</u>	<u>Determination Date</u>	<u>Certification Date</u>
1	PC/NW		78.4	10/21/2016	11/20/2016

The wetland determination was completed in the \_\_\_\_\_ office. It was *mailed* On: 10/21/2016

Remarks:	
----------	--

I certify that the above determinations are correct and were conducted in accordance with policies and procedures contained in the National Food Security Act Manual.

Signature Designated Conservationist  Micah Meyer	Date 10/21/2016
--	--------------------

The U.S. Department of Agriculture (USDA) prohibits discrimination in all of its programs and activities on the basis of race, color, national origin, age, disability, and where applicable, sex, marital status, familial status, parental status, religion, sexual orientation, political beliefs, genetic information, reprisal, or because all or part of an individual's income is derived from any public assistance program. (Not all prohibited bases apply to all programs.) Persons with disabilities who require alternative means for communication of program information (Braille, large print, audiotape, etc.) should contact USDA's TARGET Center at (202) 720-2600 (voice and TDD). To file a complaint of discrimination, write to USDA, Assistant Secretary for Civil Rights, Office of the Assistant Secretary for Civil Rights, 1400 Independence Avenue, S.W., Stop 9410, Washington, DC 20250-9410, or call tollfree at (866) 632-9992 (English) or (800) 877-8339 (TDD) or (866) 377-8642 (English Federal-relay) or (800) 845-6136 (Spanish Federal-relay). USDA is an equal opportunity provider and employer.

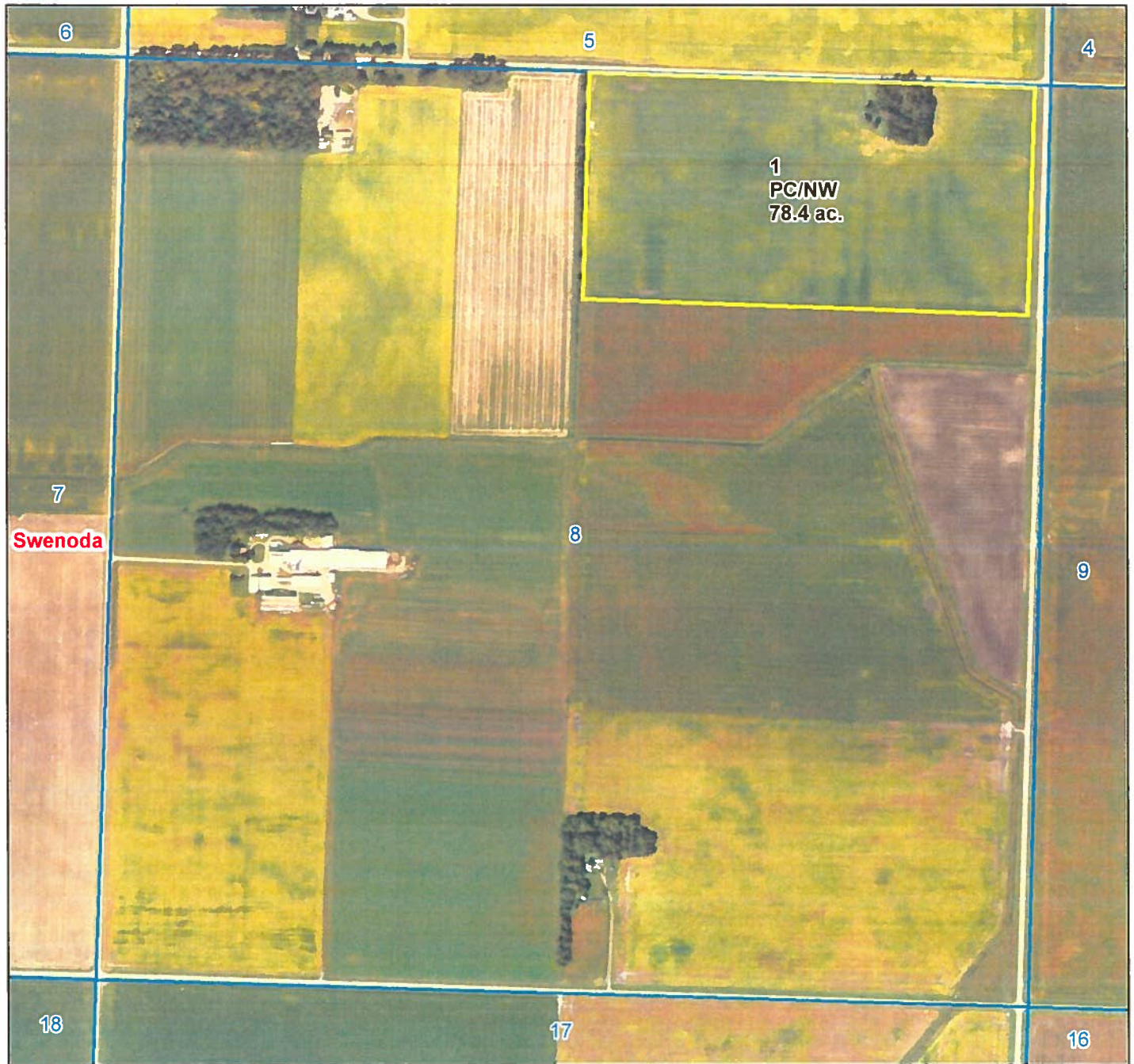




# Certified Wetland Determination

Customer: \                      n  
Tract: 2051

10/21/2016



Not Evaluated	CWTE
PC/NW	MIW
W	MW
FW	MWM
FWP	NW
AW	NW/NAD
CME	PC
CPD	TP
CW	WX

## Swift County Swenoda S8 T120 R40

1:10,000 1 inch = 833 feet



This certified wetland determination/delineation has been conducted for the purpose of implementing the wetland conservation provisions of the Food Security Act of 1985. This determination/delineation may not be valid for identifying the extent of the Corps of Engineers (COE's) Clean Water Act jurisdiction for this site. Other federal, state or local permits or restrictions may apply to activities impacting wetlands. Contact the US Fish and Wildlife Service for information concerning conservation easements. Contact the Local Governmental Unit (LGU) for State Wetland Conservation Act permits and Minnesota Department of Natural Resources for protected water permits prior to initiating wetland activities by completing the "Minnesota Joint Project Notification Form" available from the LGU.





October 24, 2016

RE: AD-1026 2051: Swenoda-8

Dear

You have indicated your intention to conduct tree removal that has not been previously evaluated by NRCS by checking yes on USDA form AD-1026 to either question 7a or question 7b.

Based on the existing Certified Wetland Determination we have on file and on your intended actions that are documented on maps, plans, or drainage worksheets you submitted, I have concluded that the activity being proposed **will not convert** a wetland or cause a potential wetland compliance violation. Please consider the enclosed CPA-026 and map for more information.

It is your responsibility to document and retain records of all drainage activities. This information can be documented on the Drainage Worksheets available at your USDA Service Center. It is your responsibility to restrict all drainage activity to only that allowable under the wetland compliance provisions.

*This determination applies to the 1985 Food Security Act (FSA) as amended. Other federal, state or local permits or restrictions may apply to activities impacting wetlands. It is the responsibility of the participant to obtain other necessary permits. Contact the US Fish and Wildlife Service for information concerning conservation easements. Contact the Army Corps of Engineers for Clean Water Act permits. Contact the Local Governmental Unit (LGU) for State Wetland Conservation Act permits and the Minnesota Department of Natural Resources for protected water permits prior to initiating wetland activities by completing the "Minnesota Joint Project Notification Form" available from the LGU.*

*The 2014 Farm Bill connected producer eligibility for Federal crop insurance premium subsidy to compliance with the wetland conservation provisions. Eligibility for most USDA programs is lost for any wetland conversions that have occurred after December 23, 1985. However, only wetland conversions that occur after February 7, 2014, result in ineligibility for Federal crop insurance premium subsidy.*

If you have questions concerning this notification, please contact Micah Meyer, Wetland Specialist at (320) 598-7321 Ext. 114, or the local NRCS office. A copy of this response will be provided to the Swift County Farm Services Agency (FSA).

Sincerely,

Micah Meyer, Wetland Specialist  
USDA-NRCS

cc: Swift County - County Executive Director, Farm Services Agency  
Swift County - District Conservationist, Natural Resources Conservation Service

Natural Resources Conservation Service  
122 8<sup>th</sup> Ave South, Suite 1- Madison, MN 56256  
Phone: 320-598-7321  
An Equal Opportunity Provider and Employer





October 24, 2016

1 31

RE: Small Area Exemption to N/HEL Determination

Dear

You recently provided the Farm Service Agency (FSA) with a Highly Erodible Land Conservation (HELC) and Wetland Conservation (WC) Certification (form AD1026) dated and signed 6/30/2016 for Tract Number 2051. Your certification indicates that you checked question #6 "YES" meaning that you are planning to produce an agricultural commodity crop on approximately 2.8 acres which has been or will be converted to cropland. However, there is no current Highly Erodible Land determination on record for this acreage as required by the Food Security Act of 1985 (1985 FSA), as amended.

The NRCS has reviewed the proposed area to be converted and concluded that it is covered by the small area exemption to the HEL determination procedures. Because this small area is exempt NRCS will not conduct a new determination. For NRCS conservation planning purposes this area will be included in the acres of the adjacent existing cropland field.

It has previously been determined that:

- The adjacent existing field has been previously determined to be Not Highly Erodible (NHEL). This small area to be converted to cropland does not require a compliance plan and you do not need to take further action.

If you have questions concerning this notification, please contact the local NRCS office at 320-842-7201. A copy of this response will be provided to the Swift County Farm Services Agency (FSA).

Sincerely,

Micah Meyer, Wetland Specialist  
USDA-NRCS

cc: Swift County - County Executive Director, Farm Services Agency  
Swift County - District Conservationist, Natural Resources Conservation Service

Natural Resources Conservation Service  
122 8<sup>th</sup> Ave South, Suite 1  
Madison, MN 56256  
Phone: 320-598-7321

*An Equal Opportunity Provider and Employer*

October 21, 2016

231

RE: Certified Wetland Determination in response to AD-1026 request

Dear [REDACTED]

The Natural Resources Conservation Service (NRCS) recently received an AD-1026 Highly Erodible Land Conservation and Wetland Conservation Certification (HELC/WC) from the Farm Service Agency (FSA) for **Tract 2051 (Svenoda-8) in Swift County**. As a result of that request, NRCS is issuing a Certified Wetland Determination in accordance with the wetland provisions of the Food Security Act of 1985, as amended. This Preliminary Technical Determination was conducted by NRCS staff and concludes the following:

**This area, as identified on the enclosed NRCS-CPA-026 form and map, has been determined Prior-Converted Cropland and/or Non-Wetland (PC\NW).** The land identified meets the definition for PC/NW (7 CFR 12.5-b) and as such, is exempt from the USDA wetland compliance provisions.

This Preliminary Technical Determination will become a Final Technical Determination in accordance with regulatory requirements Title 7 Code of Federal Regulations (C.F.R.) Part 614.8(a)(1). **NRCS has determined that the determination(s) presented here are not appealable.** You may seek a review of this determination by filing a written request with the National Appeals Division (NAD) no later than 30 calendar days after the date you receive this notice in accordance with the NRCS appeal procedures found at 7 C.F.R. Part 614 and the NAD appeal procedures found at 7 C.F.R. Part 11. If you believe this issue is appealable, you must write to the NAD director at the address given and explain why you believe this determination is appealable. Please provide NRCS a copy of this request.

National Appeals Division (NAD)  
3101 Park Center Drive, Suite 1100  
Alexandria, VA 22302

*This certified wetland determination/delineation has been conducted for the purpose of implementing the wetland conservation provisions of the Food Security Act of 1985. This determination/delineation may not be valid for identifying the extent of the Corps of Engineers' (COE's) Clean Water Act jurisdiction for this site. If you intend to conduct any activity that constitutes a discharge of dredged or fill material into wetlands or other waters, you should request a jurisdictional determination from the local office of the COE prior to starting the work. Other federal, state or local permits or restrictions may apply to activities impacting wetlands. Contact the US Fish and Wildlife Service for information concerning conservation easements. Contact the Local Governmental Unit (LGU) for State Wetland Conservation Act permits and Minnesota Department of Natural Resources for protected water permits prior to initiating wetland activities by completing the "Minnesota Joint Project Notification Form" available from the LGU.*

*The 2014 Farm Bill connected producer eligibility for Federal crop insurance premium subsidy to compliance with the wetland conservation provisions. Eligibility for most USDA programs is lost for any wetland conversions that have occurred after December 23, 1985. However, only wetland conversions that occur after February 7, 2014, result in ineligibility for Federal crop insurance premium subsidy.*

If you have questions concerning this notification, please contact Micah Meyer, Wetland Specialist at (320) 598-7321 Ext. 114. Please keep NRCS informed of your decision to exercise these options.

Sincerely,



Micah Meyer, Wetland Specialist  
USDA-NRCS

cc: Swift County, County Executive Director, Farm Services Agency  
Swift County, District Conservationist, Natural Resources Conservation Service

Natural Resources Conservation Service  
122 8th Ave. S, Suite 1 - Madison, MN 56256  
(320) 598-7321

An Equal Opportunity Provider and Employer



30950

This form is available electronically.  
AD-1026  
(10-30-14)

(See Page 2 for Privacy Act and Paperwork Reduction Act Statements)

U.S. DEPARTMENT OF AGRICULTURE  
Farm Service Agency

HIGHLY ERODIBLE LAND CONSERVATION (HELC) AND  
WETLAND CONSERVATION (WC) CERTIFICATION

Read attached AD-1026 Appendix before completing form.

PART A - FARM INFORMATION			
1 Name	2 Tax Identification Number (Last 4 digits)	3 Crop Year	
4 Name with farming interests Enter None if applicable	7415	2016	
<p>Affiliated persons with farming interests must also file an AD-1026. See Item 7 in the Appendix for a definition of an affiliated person.</p>			
<p>5 Check one of these boxes as if the statement applies; otherwise continue to Part B.</p> <p>A <input type="checkbox"/> The producer in Part A does not have interest in land devoted to agriculture. Examples include bee keepers who place their hives on another person's land, producers of crops grown in greenhouses, and producers of aquaculture AND these producers do not own/lease any agricultural land themselves. <b>Note:</b> Do not check this box if the producer shares in a crop.</p> <p>B <input type="checkbox"/> The producer in Part A meets all three of the following:</p> <ul style="list-style-type: none"> <li>• does not participate in any USDA program that is subject to HELC and WC compliance except Federal Crop Insurance</li> <li>• only has interest in land devoted to agriculture which is exclusively used for perennial crops except sugarcane, and</li> <li>• has not converted a wetland after February 7, 2014.</li> </ul> <p>Perennial crops include, but are not limited to, tree fruit, tree nuts, grapes, olives, native pasture and perennial forage. A producer that produces alfalfa should contact the Natural Resources Conservation Service at the nearest USDA Service Center to determine whether such production qualifies as production of a perennial crop.</p> <p><b>Note:</b> If either box is checked, and the producer in Part A does not participate in Farm Service Agency (FSA) or Natural Resources Conservation Service (NRCS) programs, the full tax identification number of the producer must be provided, but establishment of detailed farm records with FSA is not required. Go to Part D and sign and date.</p>			
PART B - HELC/WC COMPLIANCE QUESTIONS			
<p>Indicate YES or NO to each question. If you are unsure of whether a HELC determination, wetland determination, or NRCS evaluation has been completed, contact your local USDA Service Center.</p>			YES NO
6 During the crop year entered in Part A or the term of a requested USDA loan, did or will the producer in Part A plant or produce an agricultural commodity (including sugarcane) on land for which an HELC determination has not been made?			X
7 Has anyone performed (since December 23, 1985), or will anyone perform any activities to:			
A Create new drainage systems, conduct land leveling, filling, dredging, land clearing, or excavation that has NOT been evaluated by NRCS? If "YES", indicate the year(s):			X
B Improve or modify an existing drainage system that has NOT been evaluated by NRCS? If "YES", indicate the year(s):			X
C Maintain an existing drainage system that has NOT been evaluated by NRCS? If "YES", indicate the year(s): <b>Note:</b> Maintenance is the repair, rehabilitation, or replacement of the capacity of existing drainage systems to allow for the continued use of wetlands currently in agricultural production and the continued management of other areas as they were used before December 23, 1985. This allows a person to reconstruct or maintain the capacity of the original system or install a replacement system that is more durable or will realize lower maintenance or costs.			Y
<p><b>Note:</b> If "YES" is checked for Item 7A or 7B, then Part C must be completed to authorize NRCS to make an HELC/WC and/or certified wetland determination on the identified land. If "YES" is checked for Item 7C, NRCS does not have to conduct a certified wetland determination.</p>			
8 Check one or both boxes, if applicable; otherwise, continue to Part C or D.			
A <input type="checkbox"/> Check this box only if the producer in Part A has FCIC reinsured crop insurance and filing this form represents the first time the producer in Part A, including any affiliated person, has been subject to HELC and WC provisions.			
B <input type="checkbox"/> Check this box if either of the following applies to the producer and crop year entered in Part A:			
<ul style="list-style-type: none"> <li>• Is a tenant on a farm that is/will not be in compliance with HELC and WC provisions because the landlord refuses to allow compliance, but all other farms not associated with that landlord are in compliance. (AD-1026B Tenant Exemption Request, must be completed).</li> <li>• Is a landlord of a farm that is/will not be in compliance with HELC and WC provisions because of a violation by the tenant on that farm, but all other farms not associated with that tenant are in compliance. (AD-1026C Landlord or Landowner Exemption Request, must be completed).</li> </ul>			
PART C - ADDITIONAL INFORMATION			
9 If "YES" was checked in Item 6 or 7, provide the following information for the land to which the answer applies:			
A Farm and/or tract/field number	If unknown, contact the Farm Service Agency at the nearest USDA Service Center.		
B Activity			
C Current land use (specify crops)			
D County			

## Swift County, Minnesota

Activity allowed as indicated for  
 Swampbuster purposes. Other  
 Federal, State and Local rules may  
 apply, see letter. *WDM 16-21-160*

1  
 75.55  
 NHSL

5 4  
 T120 R40 T120 R40  
 Swenoda Swenoda  
 8 9  
 T120 R40 T120 R40  
 Swenoda Swenoda

Farm 3873

Tract 2051



2016 Program Year

Map Created January 17, 2016



Unless otherwise noted: crops are non-irrigated

Corn = yellow for grain

Soybeans = common soybeans for grain

Wheat = HRS for grain or HRW for grain

Oats and Barley = Spring for grain

Rye = for grain

Peas = process

Alfalfa, Mixed Forage AGM, GMA, IGS = for forage

Beans = Dry Edible

NAG = for GZ

Canola = Spring for seed

Sunflower = oil or non-oil for grain

### Common Land Unit

Non-Cropland

Cropland

Tract Boundary



PLSS

### Wetland Determination Identifiers

● Restricted Use

○ Limited Restrictions

■ Exempt from Conservation

□ Compliance Provisions

Tract Cropland Total: 75.55 acres

USDA FSA maps are for FSA Program administration only. This map does not represent a legal survey or reflect actual ownership; rather, it depicts the information provided directly from the producer under the 2015 NAMP inventory. The producer accepts the data as is and assumes all risks associated with its use. The USDA Farm Service Agency assumes no responsibility for actual or consequential damage incurred as a result of any user's reliance on this data outside FSA Programs. Wetland identifiers do not represent the size, shape, or specific determination of the area. Refer to your original determination (CPA, U26 and attached maps) for exact boundaries and determinations or contact NRCIS.



HIGHLY ERODIBLE LAND AND WETLAND  
CONSERVATION DETERMINATION

4. Name of USDA Agency or Person Requesting Determination

No.

## SECTION I - HIGHLY ERODIBLE LAND

6. Is soil survey now available for making a highly erodible land determination?	Yes	No	Field No.(s)	Total Acres
7. Are there highly erodible soil map units on this farm?	<input checked="" type="checkbox"/>	<input type="checkbox"/>		
8. List highly erodible fields that, according to ASCS records, were used to produce an agricultural commodity in any crop year during 1981-1985.	<input type="checkbox"/>	<input checked="" type="checkbox"/>		
9. List highly erodible fields that have been or will be converted for the production of agricultural commodities and, according to ASCS records, were not used for this purpose in any crop year during 1981-1985; and were not enrolled in a USDA set-aside or diversion program.	<input type="checkbox"/>	<input type="checkbox"/>	NONE	
10. This Highly Erodible Land determination was completed in the: Office <input checked="" type="checkbox"/> Field <input type="checkbox"/>				

NOTE: If you have highly erodible cropland fields, you may need to have a conservation plan developed for these fields. For further information, contact the local office of the Soil Conservation Service.

## SECTION II - WETLAND

11. Are there hydric soils on this farm?	Yes	No	Field No.(s)	Total Wetland Acres
List field numbers and acres, where appropriate, for the following EXEMPTED WETLANDS:	<input checked="" type="checkbox"/>	<input type="checkbox"/>		
12. Wetlands (W), including abandoned wetlands, or Farmed Wetlands (FW). Wetlands may be farmed under natural conditions. Farmed Wetlands may be farmed and maintained in the same manner as they were prior to December 23, 1985, as long as they are not abandoned.	<input type="checkbox"/>	<input type="checkbox"/>	None	
13. Prior Converted Wetlands (PC) - The use, management, drainage, and alteration of prior converted wetlands (PC) are not subject to FSA unless the area reverts to wetland as a result of abandonment. You should inform SCS of any area to be used to produce an agricultural commodity that has not been cropped, managed, or maintained for 5 years or more.	<input type="checkbox"/>	<input type="checkbox"/>	—	
14. Artificial Wetlands (AW) - Artificial Wetlands includes irrigation induced wetlands. These Wetlands are not subject to FSA.	<input type="checkbox"/>	<input type="checkbox"/>	—	
15. Minimal Effect Wetlands (MW) - These wetlands are to be farmed according to the minimal effect agreement signed at the time the minimal effect determination was made.	<input type="checkbox"/>	<input type="checkbox"/>	—	

## NON-EXEMPTED WETLANDS:

16. Converted Wetlands (CW) - In any year that an agricultural commodity is planted on these Converted Wetlands, you will be ineligible for USDA benefits. If you believe that the conversion was commenced before December 23, 1985, or that the conversion was caused by a third party, contact the ASCS office to request a commenced or third party determination.	<input type="checkbox"/>	<input type="checkbox"/>	—	
17. The planned alteration measures on wetlands in fields _____ are considered maintenance and are in compliance with FSA.				
18. The planned alteration measures on wetlands in fields _____ are not considered to be maintenance and if installed will cause the area to become a Converted Wetland (CW). See item 16 for information on CW.				
19. This wetland determination was completed in the: Office <input checked="" type="checkbox"/> Field <input type="checkbox"/>				
20. This determination was: Delivered <input type="checkbox"/> Mailed <input checked="" type="checkbox"/> To the Person on Date: 11-19-90				

NOTE: If you do not agree with this determination, you may request a reconsideration from the person that signed this form in Block 22 below. The reconsideration is a prerequisite for any further appeal. The request for the reconsideration must be in writing and must state your reasons for the request. The request must be mailed or delivered within 15 days after this determination is mailed to or otherwise made available to you. Please see reverse side of the producer's copy of this form for more information on appeals procedure.

NOTE: If you intend to convert additional land to cropland or alter any wetlands, you must initiate another Form AD-1026 at the local office of ASCS. Abandonment is where land has not been cropped, managed, or maintained for 5 years or more. You should inform SCS if you plan to produce an agricultural commodity on abandoned wetlands.

21. Remarks

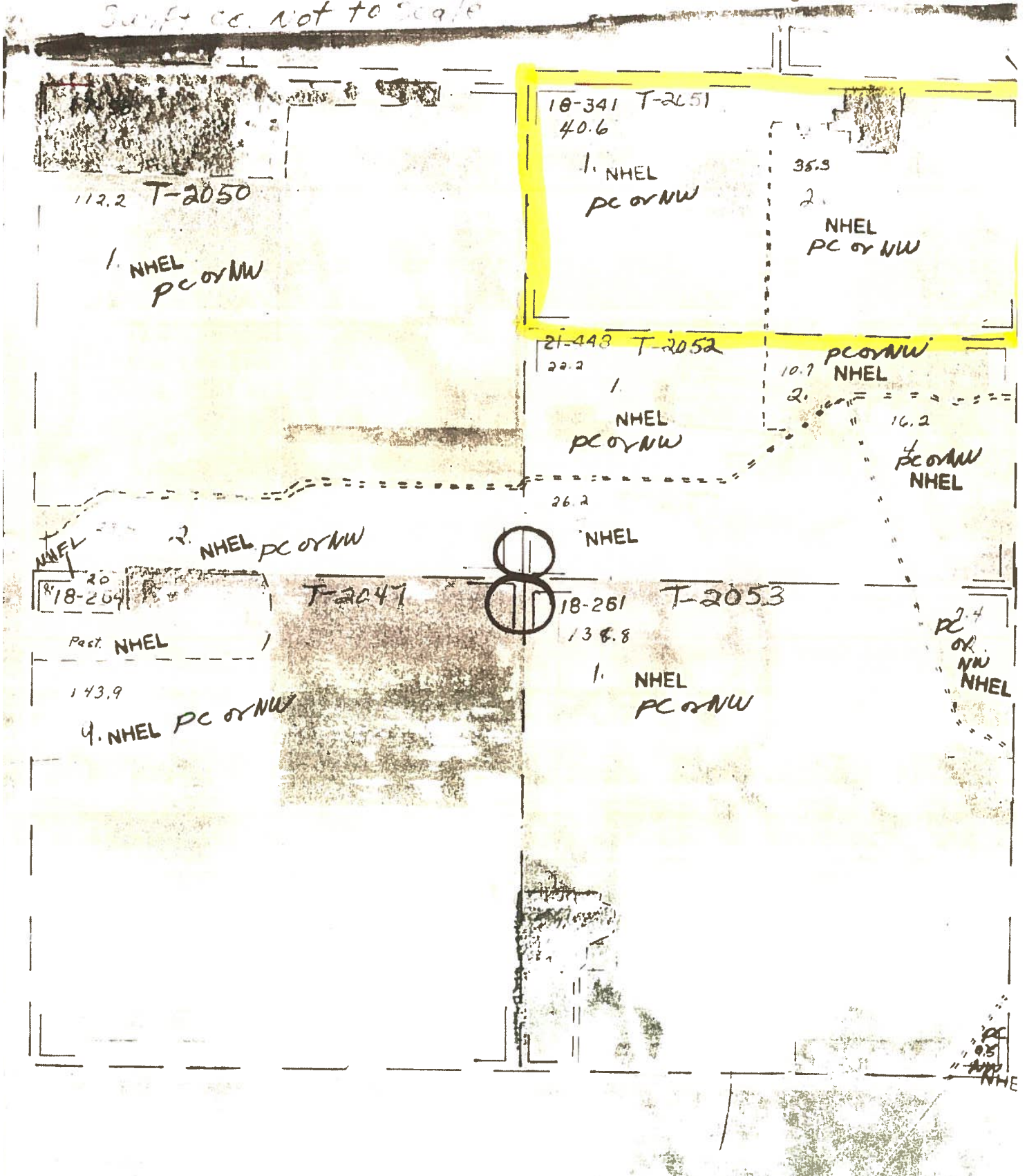
11-26-90

22. Signature of SCS District Conservationist

23. Date

Assistance and programs of the Soil Conservation Service available without regard to race, religion, color, sex, age, handicap, etc.

Surf. cc. Not to scale







United States  
Department of  
Agriculture

Soil  
Conservation  
Service

P.O. Box 156  
Benson, MN 56215

Date 11-5-90

Dear Rodney,

We have received your ASCS 1026 form which requires a highly erodible land and a wetland determination made by SCS for farm number (s) #1210 T-2051. On this property located in N 1/2 of NE 1/4 sec. 8, Swenoda Twp. I have determined wetlands found \_\_\_\_\_ or not found ✓ on this property as per attached photo/photos. Swampbuster rules allow maintenance of an exsisting drainage system if the system has not been abandoned. (no farming of the area for 5 consecutive years is considered abandonment).

Production of an ag commodity in a wetland area is allowed if no alternation to the area is done after December 23rd, 1985.

HEL (highly erodible land) fields are located \_\_\_\_\_ were not located ✓ on this property. If you have one or more HEL determined fields you need to contact our office to see when we can work out a conservation plan with you, if we have not already done so. Our phone number is 612-843-2458.

If you have information to show that a wetland "w" had been drained prior to December 23, 1985 will you bring this into our office, prior to doing any maintenance work.

If you wish to appeal this determination you should do so in writing to our office within 45 days.

Sincerely,

Lyle L. Popma

Swift County

Soil Conservation Service

MINNESOTA

SWIFT

Form: FSA-156EZ

See Page 2 for non-discriminatory Statements.



United States Department of Agriculture  
Farm Service Agency

## Abbreviated 156 Farm Record

FARM : 8045

Prepared : 10/29/24 3:46 PM CST

Crop Year : 2025

Operator Name :  
CRP Contract Number(s) : None  
Recon ID : 27-151-2022-36  
Transferred From : None  
ARCPLC G//F Eligibility : Eligible

## Farm Land Data

Farmland	Cropland	DCP Cropland	WBP	EWP	WRP	GRP	Sugarcane	Farm Status	Number Of Tracts
78.35	75.55	75.55	0.00	0.00	0.00	0.00	0.0	Active	1
State Conservation	Other Conservation	Effective DCP Cropland		Double Cropped		CRP	MPL	DCP Ag.Rel. Activity	SOD
0.00	0.00	75.55		0.00		0.00	0.00	0.00	0.00

## Crop Election Choice

ARC Individual	ARC County	Price Loss Coverage
None	CORN, SOYBN	None

## DCP Crop Data

Crop Name	Base Acres	CCC-505 CRP Reduction Acres	PLC Yield	HIP
Corn	37.76	0.00	153	0
Soybeans	37.76	0.00	39	0
<b>TOTAL</b>	<b>75.52</b>	<b>0.00</b>		

## NOTES

Tract Number : 2051

Description : TW18 S8 N2NE4  
FSA Physical Location : MINNESOTA/SWIFT  
ANSI Physical Location : MINNESOTA/SWIFT  
BIA Unit Range Number :  
HEL Status : NHEL: No agricultural commodity planted on undetermined fields  
Wetland Status : Tract does not contain a wetland  
WL Violations : None  
Owners : RODNEY FRAGODT  
Other Producers :  
Recon ID : None

## Tract Land Data

Farm Land	Cropland	DCP Cropland	WBP	EWP	WRP	GRP	Sugarcane
78.35	75.55	75.55	0.00	0.00	0.00	0.00	0.0



MINNESOTA  
SWIFT  
Form: FSA-156EZ



United States Department of Agriculture  
Farm Service Agency

Abbreviated 156 Farm Record

FARM : 8045  
Prepared : 10/29/24 3:46 PM CST  
Crop Year : 2025

Tract 2051 Continued ...

State Conservation	Other Conservation	Effective DCP Cropland	Double Cropped	CRP	MPL	DCP Ag. Rel Activity	SOD
0.00	0.00	75.55	0.00	0.00	0.00	0.00	0.00

DCP Crop Data

Crop Name	Base Acres	CCC-505 CRP Reduction Acres	PLC Yield
Corn	37.76	0.00	153
Soybeans	37.76	0.00	39

**TOTAL** 75.52 0.00

NOTES

In accordance with Federal civil rights law and U.S. Department of Agriculture (USDA) civil rights regulations and policies, the USDA, its Agencies, offices, and employees, and institutions participating in or administering USDA programs are prohibited from discriminating based on race, color, national origin, religion, sex, gender identity (including gender expression), sexual orientation, disability, age, marital status, family/parental status, income derived from a public assistance program, political beliefs, or reprisal or retaliation for prior civil rights activity, in any program or activity conducted or funded by USDA (not all bases apply to all programs). Remedies and complaint filing deadlines vary by program or incident.

Persons with disabilities who require alternative means of communication for program information (e.g., Braille, large print, audiotape, American Sign Language, etc.) should contact the responsible Agency or USDA's TARGET Center at (202) 720-2600 (voice and TTY) or contact USDA through the Federal Relay Service at (800) 877-8339. Additionally, program information may be made available in languages other than English.

To file a program discrimination complaint, complete the USDA Program Discrimination Complaint Form, AD-3027, found online at [http://www.ascr.usda.gov/complaint\\_filing\\_cust.html](http://www.ascr.usda.gov/complaint_filing_cust.html) and at any USDA office or write a letter addressed to USDA and provide in the letter all of the information requested in the form. To request a copy of the complaint form, call (866) 632-9992. Submit your completed form or letter to USDA by: (1) mail: U.S. Department of Agriculture Office of the Assistant Secretary for Civil Rights 1400 Independence Avenue, SW Washington, D.C. 20250-9410; (2) fax: (202) 690-7442; or (3) e-mail: [program.intake@usda.gov](mailto:program.intake@usda.gov). USDA is an equal opportunity provider, employer, and lender.





# ONLINE AUCTION BIDDING

The sale prices of these parcels will be determined by competitive bidding that will take place on

**[www.FragodtAuctions.com](http://www.FragodtAuctions.com)**

The bidding will not close and the property will not be sold until everyone has had the opportunity to make their best bid. The bidding will not close until there have been no bids received in a period of four (4) minutes. This means the auction will have a "soft close." Any bid placed within the last four (4) minutes of the auction will reset the countdown of the auction to four (4) minutes. Once no bids have been received for four (4) minutes, and the timer counts down to zero, the auction will be over.

To register, go to: [www.FragodtAuctions.com](http://www.FragodtAuctions.com) . Find the Login/Register button at the top of the page. Click that button. If you have already signed up for our auctions, you simply put in your Username or Email, along with your password and you are able to bid on our auctions. If you have not previously signed up for our auctions you click the Red Button that says "Register." That button will have you verify your email address, ask you a few questions about your name and address, and for our auctions that we charge Credit Cards at the conclusion, it will ask you your card information. When that information gets entered you are registered and able to bid on our auctions.

**\*NO RESERVE\* 140 +/- ACRES IN SECTION 18**

**SWENODA TOWNSHIP IN SWIFT COUNTY**

Lot Number: 1

**Completed**

Start Time: 11/11/2021 6:00:00 PM

End Time: 11/22/2021 12:00:00 PM

Bid Count: 0

Watching: 0

Starting Bid: \$0.04/Acre

Bid Increment: \$50.00

Current Bid: \$7,124.00/Acre x 140.32 Acres = \$996,639.68

140.32 Acres

Bidding complete

Contact Info: Location:

Details Auction Info Terms Item Location Documents Contacts Removal Times

Print Page